



Spring Close, Wirksworth, DE4 4JA

This attractive three storey home has panoramic views of hilly countryside to the rear and is just a 3-5 minute walk into the centre of Wirksworth. This would make a splendid starter home or first family home, especially with the easy-to-maintain garden and allocated parking space in the cul-de-sac at the rear.

The home has a kitchen with breakfast bar on the ground floor, lounge and dining room/study on the first floor and then two bedrooms and a family bathroom on the top floor.

Ideally located for walks and cycle rides along the High Peak Trail and around the warren of tracks around the National Stone Centre 5 minutes away, it's also an easy flat walk into town, where there are a good range of independent retailers and grocers.

Wirksworth is known as The Gem of the Peak and has just been named by The Sunday Times as the 'Best place to live in Derbyshire'. It is a thriving market town with a big focus on the arts, with the annual Wirksworth Festival taking place every September. Within a twenty minute walk of this home are the delights of Wirksworth town centre including the Northern Light Cinema and a range of quality eateries, friendly pubs and independent shops. There is a weekly market and monthly food market. Also within the town centre are the well-regarded Hannage Brook medical centre, Wirksworth leisure centre and popular schools. Surrounding the town are walks and cycling trails aplenty, plus Carsington Water, Chatsworth House and the bustling market towns of Matlock, Bakewell, Ashbourne, Buxton and Belper all within easy reach.

- Well-presented 2 bedroom home
- Walking distance to town and schools
- Council Tax band B
- Wirksworth named Sunday Time 'Best place to live in Derbyshire'
- Secluded, low maintenance garden
- Walks opposite to National Stone Centre and High Peak Trail
- Tremendous panoramic views to hilly countryside
- Allocated parking space
- Great starter home
- Double glazing throughout

£225,000

Spring Close, , Wirksworth, DE4 4JA

Front of the home

Located at the right-hand end of a smart row of terraced houses built in the year 2000, this home has an attractive facade and is constructed of local stone bricks. The front garden is bordered by iron railings and has patio paving and a security light, together with decorative brickwork below the guttering. A gate on the right leads into an additional front garden area. From the patio there are views to the rear over rooftops to the green hilly countryside to the east. On the opposite side of the road it's all trees too - a very green and pleasant outlook.

The home can be accessed either from the front door leading into the middle floor or, perhaps more often, via the ground floor entrance beside the allocated off-road parking space.

We will enter the home from that rear ground floor entrance...and come back to the garden later.

Kitchen

9'10" x 8'7" (3 x 2.62)

Enter from the garden through the uPVC half-glazed entrance door. The kitchen is thoughtfully laid-out, creating good worktop and storage space plus a breakfast bar. There is vinyl flooring and a very useful, spacious under-stairs cupboard. Set into the modern worktops is a stainless steel sink and drainer with chrome mixer tap. There are plenty of high and low level cupboards and space beneath the worktops for a refrigerator - and also space and plumbing for a washing machine. The Lamona four-ring gas hob has a chrome extractor fan above and a Montpellier electric oven beneath. The room has a radiator, ceiling light fitting, a south-east facing double-glazed window and carpeted stairs leading up to the first floor.

Dining Room

11'11" x 9'4" (3.65 x 2.85)

Ascending the stairs from the kitchen, you alight upon the carpeted floor of the dining room. This would equally make a great study, if you can tear yourself away from the stunning views of those hills to the east! Those two sets of double-glazed windows, the openness of the space above the stairs and the door opening through to the lounge make this a light and open area. A radiator and ceiling light fitting complete this room.

Lounge

12'9" x 8'8" (3.9 x 2.65)

Another bright and welcoming room, thanks to the deep double-glazed window (with secondary glazing too) at the front. The coal-effect electric fire is set into the marble surround and hearth, with a pine mantelpiece. Under the stairs leading up to the second floor is another large cupboard space - one of several great storage spaces in this home. This room is carpeted too and has a ceiling light fitting, radiator and a door out to the entrance hallway and the main front door.

Entrance Hall

At street level, this area is accessed from the front door and the lounge. Carpeted stairs lead up to the top floor. There are ceiling light fittings at the bottom and top of the stairs and on the landing, a radiator and loft hatch above. Doors on the second floor landing lead into both bedrooms and the family bathroom.

Bedroom One

11'11" x 6'10" (3.65 x 2.1)

The great benefit of this room is it has yet another handy storage cupboard above the stairs and an alcove, meaning more room in the main part of the bedroom. This room also has a wide, west-facing double-glazed window looking over the road in front to the tree-filled area opposite leading up towards the National Stone Centre and High Peak Trail. This carpeted room also has a radiator and ceiling light fitting.

Bathroom

6'6" x 5'6" (2 x 1.7)

This crisp white bathroom has a bath with shower attachment over and a glass shower screen. The white ceramic sink with chrome mixer tap sits atop a pretty vanity unit and there is a white WC too. Fresh white floor-to-ceiling tiles surround the bath and are also situated behind the sink and WC - the rest of the walls are painted. The window is frosted and there is a ceiling light fitting and extractor fan.



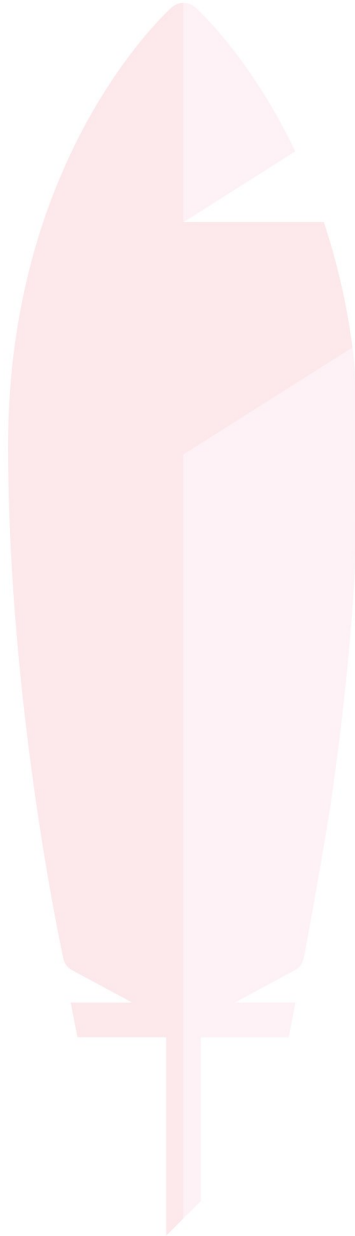
Bedroom Two

11'11" x 8'8" (3.65 x 2.65)

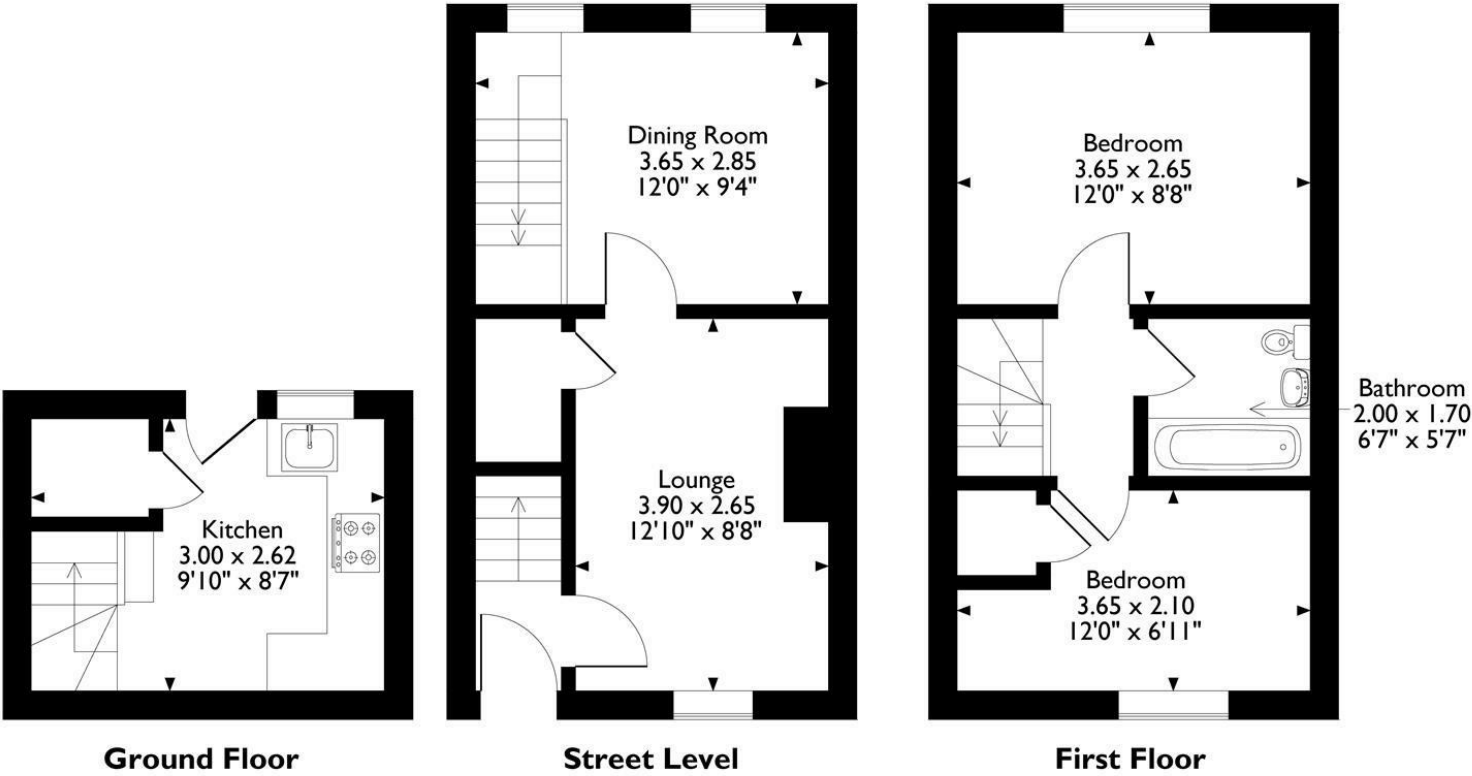
With simply stunning panoramic views, you can see the verdant rolling hills from Bolehill in the north down towards Ashleyhay and beyond to the south-east. This double bedroom is carpeted and has a wide double-glazed window, radiator and ceiling light fitting.

Rear Garden

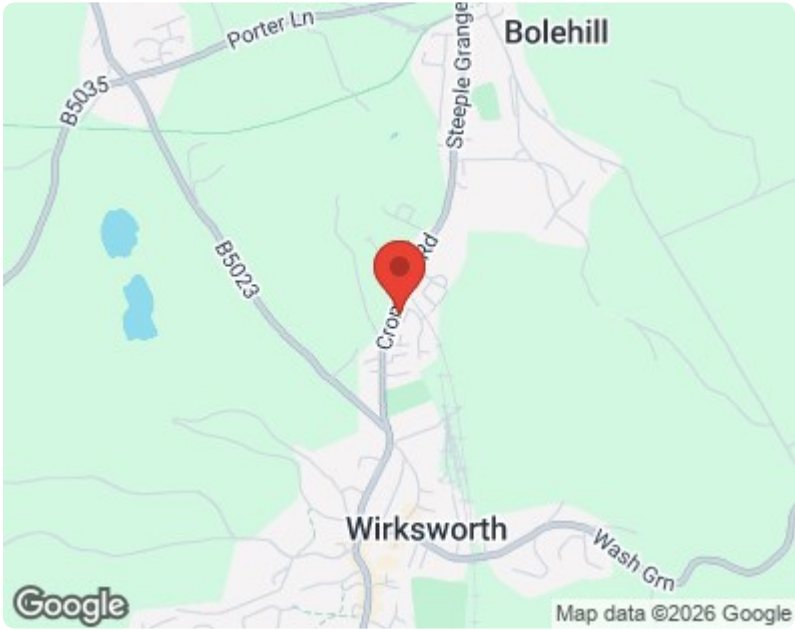
We adore this easy to maintain sun-trap of a garden! Mainly laid to gravel, there is a raised flower bed and a path from the back gate (from which you'll have parked your car in your allocated parking space) to the back door. The garden has a curved brick wall boundary on the right and a timber fence on the left. The large shed is included in the sale and there is an autumn olive tree and an outside tap for keeping the plants hydrated. It's a lovely calm, secluded sanctuary.



11 Spring Close
Approximate Gross Internal Area
62 Sq M / 663 Sq Ft



Please note that the location of doors, windows and other items are approximate and this floorplan is to be used for illustrative purposes only. Unauthorized reproduction is prohibited.



Energy Efficiency Rating			Environmental Impact (CO ₂) Rating		
	Current	Potential		Current	Potential
Very energy efficient - lower running costs			Very environmentally friendly - lower CO ₂ emissions		
(92 plus) A			(92 plus) A		
(81-91) B			(81-91) B		
(69-80) C			(69-80) C		
(55-68) D			(55-68) D		
(39-54) E			(39-54) E		
(21-38) F			(21-38) F		
(1-20) G			(1-20) G		
Not energy efficient - higher running costs			Not environmentally friendly - higher CO ₂ emissions		
England & Wales	EU Directive 2002/91/EC		England & Wales	EU Directive 2002/91/EC	